

# AAGWa Crop Production Forecasts Brief Series

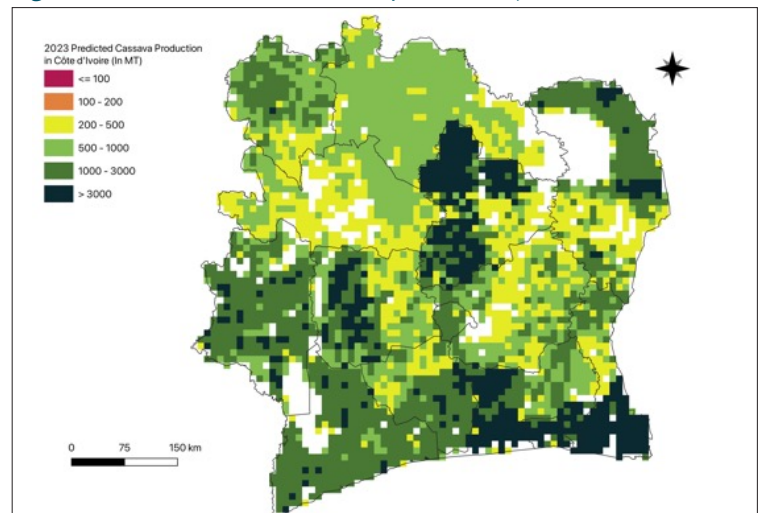
## Côte d'Ivoire – Cassava

Aissatou Ndoye\*, Khadim Dia\*\*, and Ousmane Badiane\*\*\*

No. 18, April 2023

The crop production forecast brief series by AKADEMIYA2063's Africa Agriculture Watch (AAGWa) aims to provide more accurate and timely data on harvest and yields for nine major crops across nearly 50 African countries. The timeliness, wide availability, and easy access to this type of data will allow stakeholders across the value chain to better plan and execute policy and business actions more efficiently. The data published in the briefs are generated through the Africa Crop Production (AfCP) model, an Artificial Intelligence (AI-based) model applied to remotely sensed geobiophysical data to produce estimates at pixel as well as administrative levels as early as the beginning of every growing season. In Brief 18, we provide forecasts on Cassava in Côte d'Ivoire.

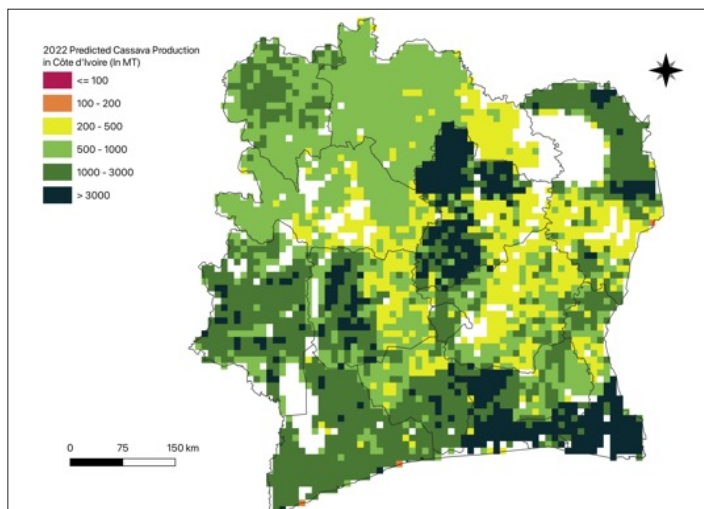
Figure 1. Côte d'Ivoire 2023 cassava production forecast.



Data Source: Africa Agriculture Watch ([www.aagwa.org](http://www.aagwa.org)).

In 2023, cassava production in Côte d'Ivoire is projected to reach 5,780,976 metric tons, corresponding to a 7% increase over 2022 production levels. However, regions in the central and southern part of the country are expected to produce the most significant volumes of cassava, particularly in Sud Comoé (Comoé), Hambol (Vallée du Bandama), Haut-Sassandra (Sassandra-Marahoué), Gbeke (Vallée du Bandama), and Bounkani (Zanzan) with production levels estimated at 714,258 MT, 678,652 MT, 378,982 MT, 371,338 MT, and 296,404 MT, respectively. In contrast,

Figure 2. Côte d'Ivoire 2022 cassava production forecast.



Data Source: Africa Agriculture Watch ([www.aagwa.org](http://www.aagwa.org)).

lower production values are observed in N'zi (Lacs), Yamoussoukro (Woroba), Worodougou, Moronou (Lacs), Bafing (Woroba), and Gôh (Gôh-Djiboua), with production values of, respectively, 21,326 MT, 30,093 MT, 43,867 MT, 48,069 MT, 54,728 MT, and 55,007 MT.

However, regions such as Sud Comoé (Comoé), Hambol (Vallée du Bandama), Haut-Sassandra (Sassandra-Marahoué), Tonkpi (Montagnes), and Grands Ponts (Lagunes) are expected to have the most significant increases of cassava production volumes in 2023 with differences of, 63,692 MT, 42,815 MT, 33,782 MT, 27,891 MT, and 24,592 MT, respectively. They similarly correspond to changes of, respectively, 10%, 7%, 10%, 14% and 12%.

\*Associate Scientist, Department of Data Management, Digital Products, and Technology, AKADEMIYA2063

\*\* Senior Associate Scientist, Department of Data Management, Digital Products, and Technology, AKADEMIYA2063

\*\*\*Executive Chairperson, AKADEMIYA2063



## Annex – 2023 Côte d'Ivoire Cassava Production Forecast at District level

Districts	Regions	2023 Prod (MT)	2022 Prod (MT)	Difference (MT)	Change (%)
Abidjan	Abidjan	118904	104084	14821	14%
Bas-Sassandra	Gbôkle	89646	86278	3368	4%
Bas-Sassandra	Nawa	200268	180254	20014	11%
Bas-Sassandra	San-Pédro	187737	172849	14888	9%
Comoé	Indénié-Djuablin	74487	72591	1896	3%
Comoé	Sud Comoé	714258	650566	63692	10%
Denguélé	Folon	84906	82913	1993	2%
Denguélé	Kabadougou	145590	145969	-379	0%
Gôh-Djiboua	Gôh	55007	54417	589	1%
Gôh-Djiboua	Lôh-Djiboua	217220	196743	20477	10%
Lacs	Bélier	72659	68131	4528	7%
Lacs	Iffou	61298	53616	7682	14%
Lacs	Moronou	48069	46355	1714	4%
Lacs	N'zi	21326	17440	3886	22%
Lagunes	Agnéby-Tiassa	270541	247678	22863	9%
Lagunes	Grands Ponts	224676	200084	24592	12%
Lagunes	La Mé	149827	137901	11926	9%
Montagnes	Cavally	178083	160138	17945	11%
Montagnes	Guémon	168095	148532	19563	13%
Montagnes	Tonkpi	228174	200282	27891	14%
Sassandra-Marahoué	Haut-Sassandra	378982	345199	33782	10%
Sassandra-Marahoué	Marahoué	64439	58581	5857	10%
Savanes	Bagoué	73699	79376	-5677	-7%
Savanes	Poro	110021	114233	-4212	-4%
Savanes	Tchologo	87582	78363	9218	12%
Vallée du Bandama	Gbeke	371338	359822	11516	3%
Vallée du Bandama	Hambol	678652	635837	42815	7%
Woroba	Bafing	54728	61568	-6840	-11%
Woroba	Béré	79065	82108	-3043	-4%
Woroba	Worodougou	43867	49113	-5247	-11%
Yamoussoukro	Yamoussoukro	30093	28091	2002	7%
Zanzan	Bounkani	296404	277672	18732	7%
Zanzan	Gontougo	201337	184296	17041	9%
<b>Total</b>		<b>5780976</b>	<b>5381079</b>	<b>399896</b>	<b>7%</b>

MT (Metric tons): 1 MT is equivalent to 1,000 kilograms

Change: refers to the relative difference and is calculated as (2023 prod – 2022 prod) divided by 2022 prod

**Suggested Citation:** Ndoye, A., K. Dia, and O. Badiane. 2023. AAgWa Crop Production Forecasts Brief Series: Côte d'Ivoire – Cassava. AAgWa Crop Production Forecasts Brief Series, No. 18. Kigali, Rwanda: AKADEMIYA2063. <https://doi.org/10.54067/acpf.18>